

# 463.3.203-23

## Vacuum cleaner motor performance

# DOMEL®

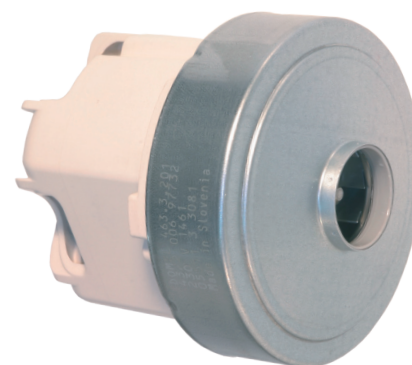
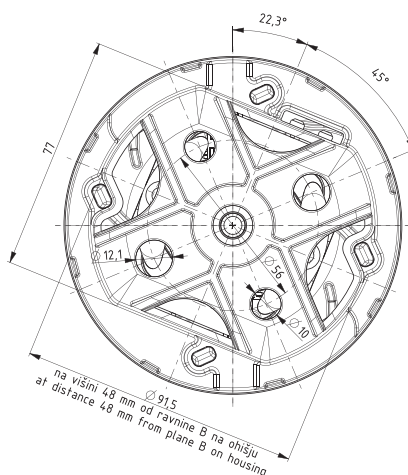
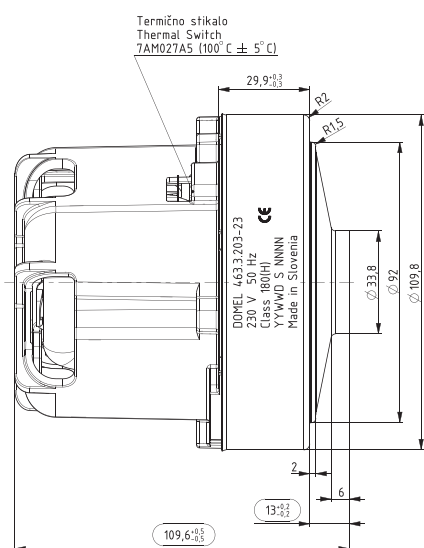
Vacuum cleaner motors with high efficiency 463.3.203-23 / 450W / 230V / 50Hz are used for dry aspiration. Technical data and dimensions are given in the table. Vacuum cleaner motors consist of universal commutator motor and single fan stage. The rotor is supported with two ball bearings enabling vertical or horizontal installation of motor. The motor is designed for insulation class 180 (H) and constructed according to EN 60335-1.

### Technical data:

Normal operation:	$P_m$	>=	430	W
Vacuum:	$P_{max}$	>=	14,9 60,0	kPa in H <sub>2</sub> O
Air Flow at $\phi 50$ :	$Q_{\phi 50}$	>=	32 68	dm <sup>3</sup> /s CFM
Air Power:	$P_{2max}$	>=	160	W
Efficiency:	$\eta_{max}$	>=	39	%
Mass:	$m$	=	1,05	kg

## Max. power 450W

Voltage:	230 V
Frequency:	50 Hz
Nominal Power:	450 W



Dimensional and performance data are subject to change without notice.

Orifice		Current	Input Power	Speed	Pressure		Air Flow		Air power	Efficiency
mm	in*	A	W	min <sup>-1</sup>	kPa	in H <sub>2</sub> O	dm <sup>3</sup> /s	CFM	W	%
50	2	1,96	446	29296	0,5	1,8	33,8	71,8	17	3,8
40	1 1/2	1,96	446	29364	1,2	6,2	33,0	68,8	38	8,6
30	1 1/8	1,94	442	29572	3,1	15,0	30,2	61,7	94	21,2
23	7/8	1,90	432	30143	6,2	26,8	25,0	50,8	155	36,0
19	3/4	1,83	416	31105	8,6	34,3	19,9	42,3	170	40,9
16	5/8	1,75	399	32283	10,6	42,7	15,6	32,7	165	41,4
13	1/2	1,65	377	33928	12,4	50,1	11,1	22,7	138	36,6
10	3/8	1,55	353	35987	13,6	55,0	6,9	13,6	94	26,5
6	1/4	1,45	332	38123	14,6	58,7	3,1	6,4	45	13,5
0	0	1,35	309	40679	15,7	63,2	0,0	0,0	0	0,0

Data above represent the performance of an average motor sample. Individual data may vary due to normal manufacturing variations.

\* Orifice in inch is only approximative.